

State of Wyoming Corner Record

(In compliance with the CORNER PERPETUATION and FILING ACT, Wyoming Statutes, 1997,
Section 33-29-140, et seq., and the rules and regulations of the Board of Registration
for Engineers and Professional Land Surveyors)

The reverse side of this form may be used if more space is needed.

The Record of the original survey and the citation of the source of the historical information (if the corner is lost or obliterated). The description of the corner monumentation evidence as found and/or the monument and it's accessories as established to perpetuate the location of this corner. A sketch of the relative location of this Monument, accessories, and reference points with the course and distance to adjacent corner (s) (if determined during this Survey). The Method and Rationale used for the reestablishment of lost and obliterated corner.

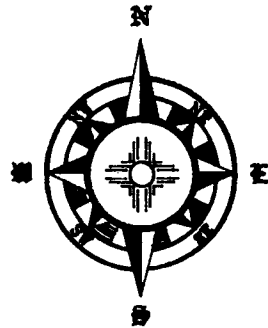
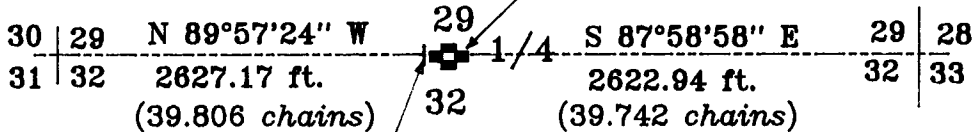
GLO notes: Survey executed by John B. Thomas under his joint contract with Henry G. Hay, 16 July 1870; East on a random line between Sec. 29 and Sec. 32; 2.00ch to bank of creek (dry) 30lks wide, bears NE; 40.00ch set stake for temporary 1/4 Sec Cor.

65.50 ch to wagon road from Cheyenne bears N.60°W., 79.57 ch intersect E. boundary 30 lks South of Section corner Sec 28, 33, 32 & 29. from thence I run S89°47'W on a true line 39.79 chs set granite boulder 16X10X5 for 1/4 Sec. Cor.

Recovered Stone well set measured 14X10X5 with 1/4 well marked thereon, set 3/8 " X 3"X 42" Iron Bar on the West of the stone painted yellow and orange for guard stake and witness.

RECORDED 5/23/2007 AT 4:21 PM REC# 475719 BK# 2008 PG# 1721
DEBRA K. LATHROP, CLERK OF LARAMIE COUNTY, WY PAGE 1 OF 1

**Recovered 14"X10"X5" Granite
Boulder with 1/4 carved thereon, well set.**



Set 3/8"X3"X42" iron stake as Guard Stake

Lat: N 41°08'46.323"
Lon: W 104°54'53.255"

Date of Field Work: May 2007 Office Reference: Cox Ranch

**Cross Index Diagram
T.14 N. R.67 W. of the 6th P.M.**

1	2	3	4	5	6	7	8	9	10	11	12	13	14	15	16	17	18	19	20	21	22	23	24	25	
A																									
B																									
C																									
D																									
E																									
F																									
G																									
H																									
J																									
K																									
L																									
M																									
N																									
O																									
P																									
Q																									
R																									
S																									
T																									
U																									
V																									
W																									
X																									
Y																									
Z																									

Firm/Agency, Address
Terrestrial Surveying & Mapping Co.
"Your Friendly Neighborhood Surveyor"
1127 Terry Ranch Road
Cheyenne, Wyoming 82007
Telephone Number: (307) 634~9360

This Corner Record was prepared by
me or under my direction and
supervision.

SEAL & SIGNATURE



Corner Name: 1/4 Section: 29 & 32 T:14 N. R67 W. 6th P.M. Cross Index No. V~7